

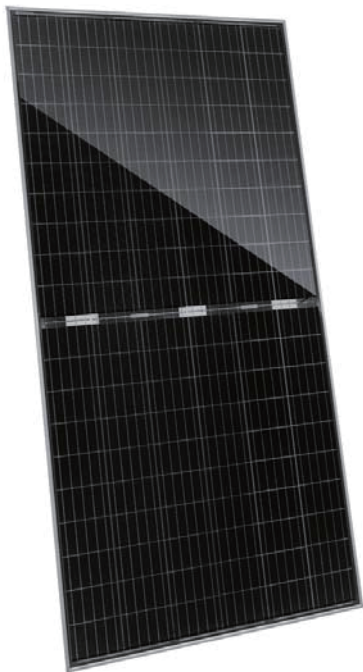
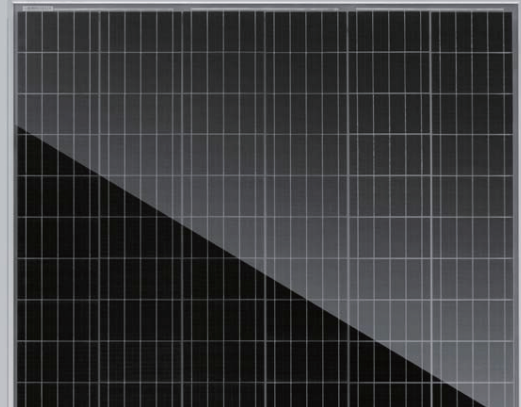
Swan Bifacial HC 60M 320-340 Watt

MONOCRYSTALLINE MODULE

Positive power tolerance of 0~+3%

ISO9001:2015, ISO14001:2015, OHSAS18001 certified factory.

IEC61215, IEC61730, certified products.



KEY FEATURES



5 Busbar Solar Cell

5 busbar solar cell adopts new technology to improve the efficiency of modules, offers a better aesthetic appearance, making it perfect for rooftop installation.



PID Resistance

Excellent Anti-PID performance guarantee limited power degradation for mass production.



Higher Lifetime Power Yield:

0.55% annual power degradation
30 year linear power warranty



Saving BOS Cost:

Light-weight design for easy installation and low BOS cost



Higher power output:

Module power increases 5-25% generally (per different reflective condition)
lower LCOE and higher IRR

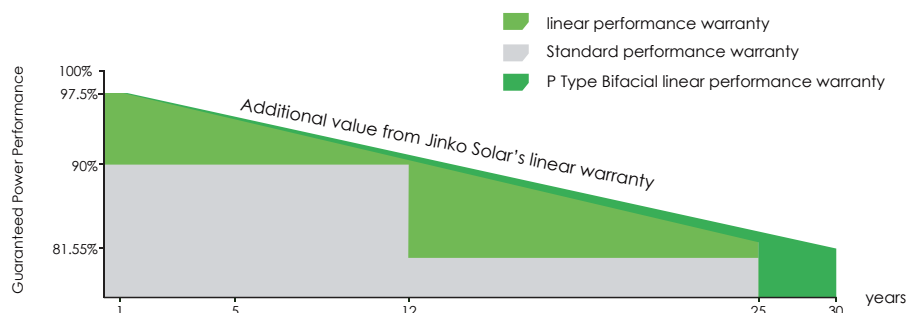


Better low-light performance:

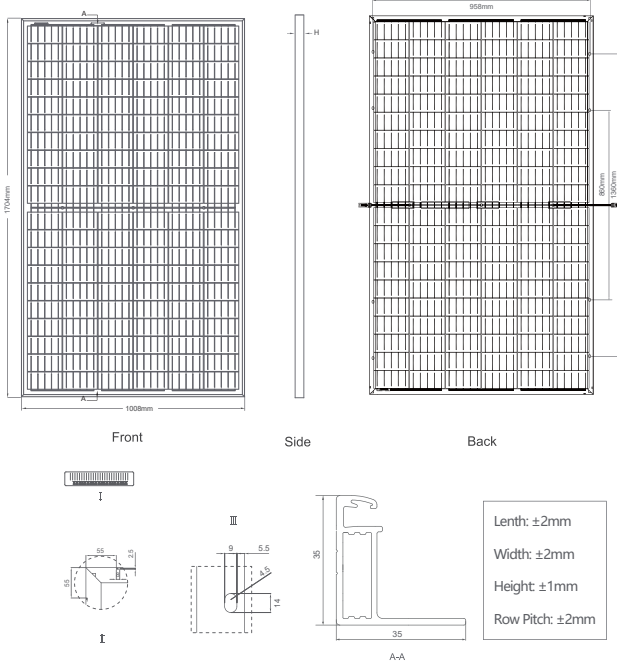
Excellent performance in low-light environments (e.g. early morning, dusk, and cloud, etc.)

LINEAR PERFORMANCE WARRANTY

12 Year Product Warranty • 30 Year Linear Power Warranty
0.55% Annual Degradation Over 30 years



Engineering Drawings

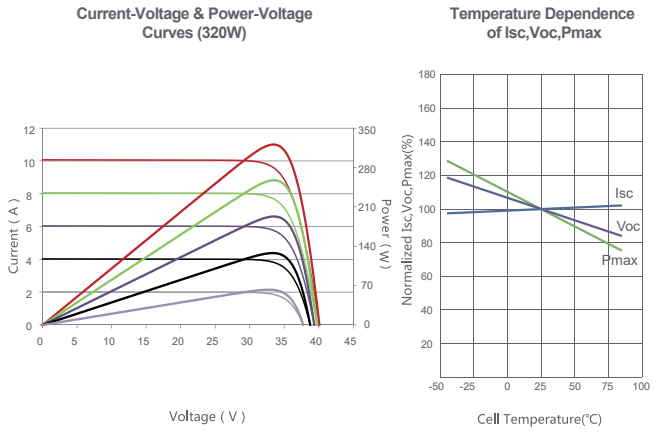


Packaging Configuration

(Two pallets = One stack)

31pcs/pallets, 62pcs/stack, 806pcs/ 40'HQ Container

Electrical Performance & Temperature Dependence



Mechanical Characteristics

Cell Type	Mono PERC 158.75×158.75mm
No. of cells	120 (6×20)
Dimensions	1704×1008×35mm (67.09×39.69×1.38 inch)
Weight	19.5kg (43.0 lbs)
Front Glass	3.2mm, Anti-Reflection Coating, High Transmission, Low Iron, Tempered Glass
Frame	Anodized Aluminium Alloy
Junction Box	IP67 Rated
Output Cables	TUV 1×4.0mm ² (+): 250mm, (-): 150mm or Customized Length

SPECIFICATIONS

Module Type	JKM320M-60H-TV		JKM325M-60H-TV		JKM330M-60H-TV		JKM335M-60H-TV		JKM340M-60H-TV	
	STC	NOCT	STC	NOCT	STC	NOCT	STC	NOCT	STC	NOCT
Maximum Power (Pmax)	320Wp	238Wp	325Wp	241Wp	330Wp	245Wp	335Wp	249Wp	340Wp	252Wp
Maximum Power Voltage (Vmp)	32.90V	30.93V	33.10V	31.13V	33.24V	31.33V	33.40V	31.48V	33.62V	31.63V
Maximum Power Current (Imp)	9.73A	7.68A	9.82A	7.75A	9.93A	7.82A	10.03A	7.90A	10.11A	7.98A
Open-circuit Voltage (Voc)	40.10V	37.77V	40.30V	37.96V	40.39V	38.04V	40.46V	38.11V	40.60V	38.24V
Short-circuit Current (Isc)	10.07A	8.13A	10.15A	8.20A	10.25A	8.28A	10.34A	8.35A	10.43A	8.42A
Module Efficiency STC (%)	18.62%		18.91%		19.20%		19.49%		19.79%	
Operating Temperature(°C)	-40°C~+85°C									
Maximum system voltage	1500VDC (IEC)									
Maximum series fuse rating	25A									
Power tolerance	0~+3%									
Temperature coefficients of Pmax	-0.35%/°C									
Temperature coefficients of Voc	-0.29%/°C									
Temperature coefficients of Isc	0.048%/°C									
Nominal operating cell temperature (NOCT)	45±2°C									
Refer. Bifacial Factor	70±5%									

BIFACIAL OUTPUT-REAR SIDE POWER GAIN

		336Wp	341Wp	347Wp	352Wp	357Wp
5%	Maximum Power (Pmax)	336Wp	341Wp	347Wp	352Wp	357Wp
	Module Efficiency STC (%)	19.55%	19.86%	20.16%	20.47%	20.78%
15%	Maximum Power (Pmax)	368Wp	374Wp	380Wp	385Wp	391Wp
	Module Efficiency STC (%)	21.41%	21.75%	22.08%	22.42%	22.76%
25%	Maximum Power (Pmax)	400Wp	406Wp	413Wp	419Wp	425Wp
	Module Efficiency STC (%)	23.27%	23.64%	24.00%	24.37%	24.74%

* STC: Irradiance 1000W/m² Cell Temperature 25°C

NOCT: Irradiance 800W/m² Ambient Temperature 20°C

AM=1.5

AM=1.5

Wind Speed 1m/s

* Power measurement tolerance: ± 3%

The company reserves the final right for explanation on any of the information presented hereby. JKM320-340M-60H-TV-F35-A3-EN