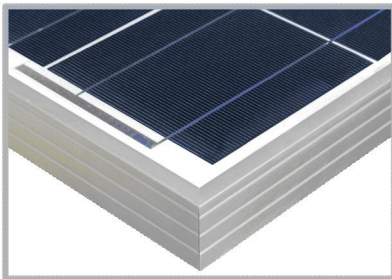
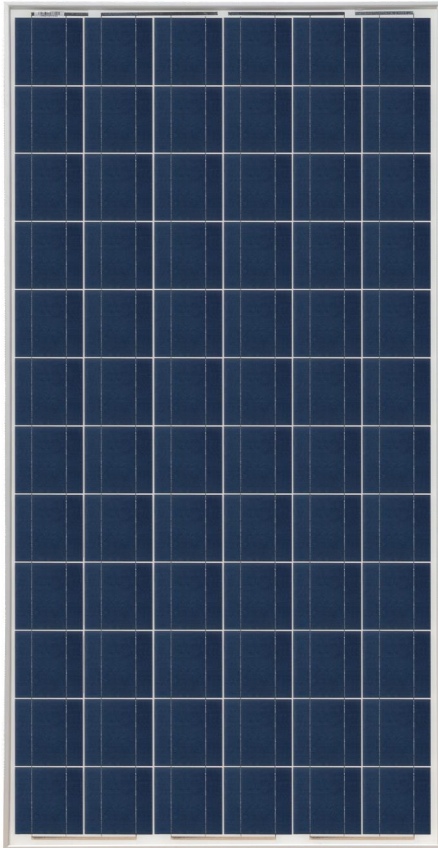




IGNITE THE POWER OF NATURE

# Polycrystalline Module 185Watt

QXPV



## Model (SL185TU-36SP) Specifications

### Electrical Data

Maximum Power(W)	185
Optimum Power Voltage(Vmp)	36.86
Optimum Operating Current(Imp)	5.02
Open Circuit Voltage(Voc)	44.78
Short Circuit Current(Isc)	5.37
Cell Efficiency (%)	16.77
Module Efficiency (%)	14.49
Tolerance Wattage(%)	0~+3%
NOCT	47°C +/-2°C

### Temperature Coefficients

Temperature Coefficients of Isc(%)°C	+0.04
Temperature Coefficients of Voc(%)°C	-0.35
Temperature Coefficients of Pm(%)°C	-0.45
Temperature Coefficients of Im(%)°C	+0.04
Temperature Coefficients of Vm(%)°C	-0.35

### Components & Mechanical Data

Solar Cell	125*125 Poly
Number of Cell(pcs)	6*12
Size of Module(mm)	1580*808*40
Front Glass Thickness(mm)	3.2
Surface Maximum Load Capacity	2400-5400Pa
Allowable Hail Load	23m/s ,7.53g
Weight Per Piece(KG)	15.0
Junction Box Type	Pass the TUV Certificate
Bypass Diode Rating(A)	12
Cable & Connector Type	Pass the TUV Certificate
Frame(Material Corners,etc.)	40#
Backing (Brand Type)	TPT
Temperature Range	-40°C to +85°C
FF (%)	70-76%
Standard Test Conditions	AM1.5 1000W/m² 25°C

## Benefits



Modules sorted by current, optimizing system power generation



High Efficiency



Stable Power



Low Carbon Emission



Excellent Weather Resistance



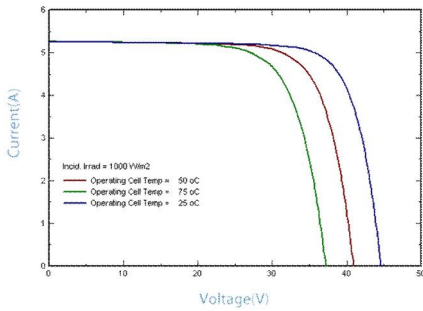


IGNITE THE POWER OF NATURE

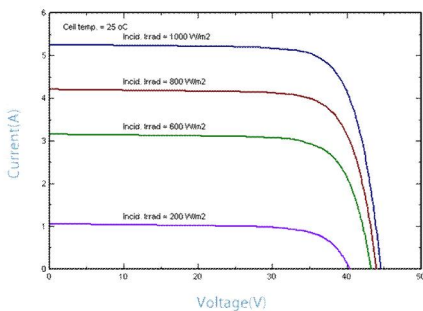
QXPV

# Polycrystalline Module 185Watt

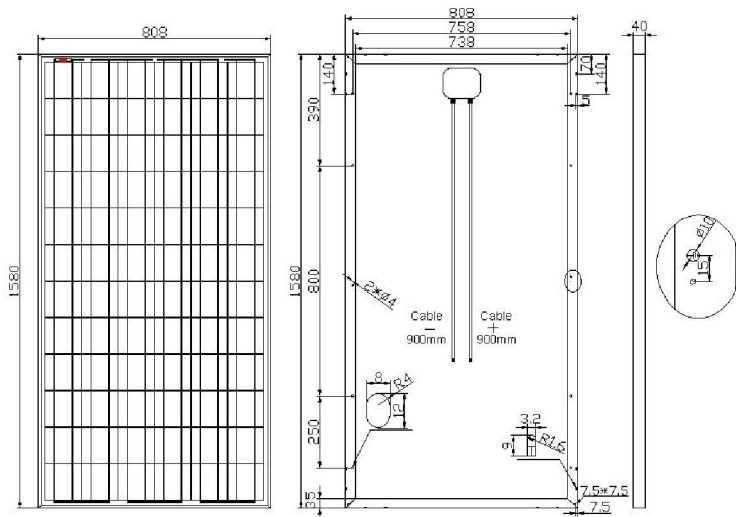
## IV-Curves



IV-CURVES of PV module  
SL185TU-36SP



## Engineering Drawings



## Warranty & Certifications

Warranty	25 years limited power warranty
	10 years limited product warranty
Certifications	IEC 61215, IEC 61730

## Packing

Packing	Wooden Box
1*20'	14Pallets/426pcs
1*40'HQ	28Pallets/924pcs

## Applications

- On-grid residential roof-tops
- On-grid commercial/industrial roof-tops
- Solar power stations
- Other on-grid applications

## Project Picture



Manufacturing facility certified to **ISO 9001 / ISO 14001 / OHSAS 18001** quality management system standards.

©2013 Ningbo Qixin Solar Electrical Appliance Co., Ltd. All rights reserved.  
Specifications included in this datasheet are subject to change without notice.



**Ningbo Qixin Solar Electrical Appliance Co., Ltd**

ADD: No. 37 Jingang Road, Binhai Industrial Park, Xiangshan County, Ningbo, 315700, China

TEL: 0086 (0)574 25758821

FAX: 0086 (0)574 25758820

E-mail: info@nbqxsolar.com