

QUALITY
RELIABILITY
TRUE VALUE

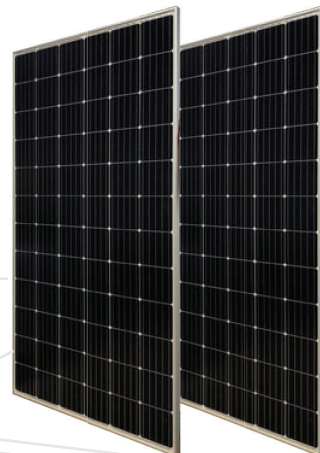


SunSpark
Technology Inc.

Buy American and Reduce Your Carbon Footprint

MONO MODULE

72 CELL PERC
360W, 365W,
370W, 375W



Supply Black and Silver Frame



Better Temperature Coefficient

Excellent temperature coefficient gives higher yield in the long term



Low-light Performance

Outstanding performance in weak-light conditions



PID Free

Excellent PID resistance



Positive Tolerance

Positive tight power tolerance of +5W



Quality Assurance

Double stage 100% EL inspection warranting defect-free products, with 8 high tech cameras to zoom in for a closer examination



Durability And Weather Resistance

- Severe salt mist, ammonia & blown sand resistance for seaside, farm and desert environments.
- Certified for high snow(5400 pa) and wind (2400 pa) loads



01

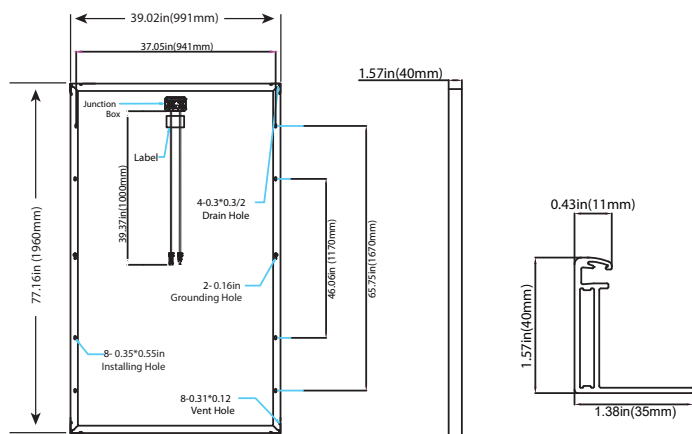
MADE IN CALIFORNIA



02

25 YEARS
LINEAR WARRANTY
12 YEARS
WORKMANSHIP
WARRANTY



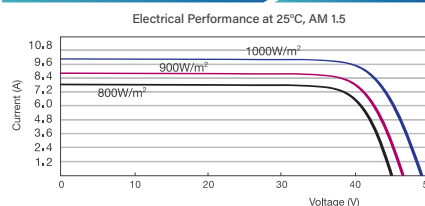


Mono Module

72 CELL 360W, 365W, 370W, 375W

Electrical Specifications	SST-360M	SST-365M	SST-370M	SST-375M
Maximum Power(Pmax)	360W	365W	370W	375W
Power Tolerance	0~+5W	0~+5W	0~+5W	0~+5W
Module Efficiency	18.53%	18.79%	19.05%	19.31%
Maximum Power Current(Imp)	9.12A	9.2A	9.28A	9.33A
Maximum Power Voltage(Vmp)	39.5V	39.7V	39.9V	40.2V
Short Circuit Current (Isc)	9.51A	9.57A	9.61A	9.68A
Open Circuit Voltage (Voc)	48.0V	48.2V	48.5V	48.7V

IV-CURVE



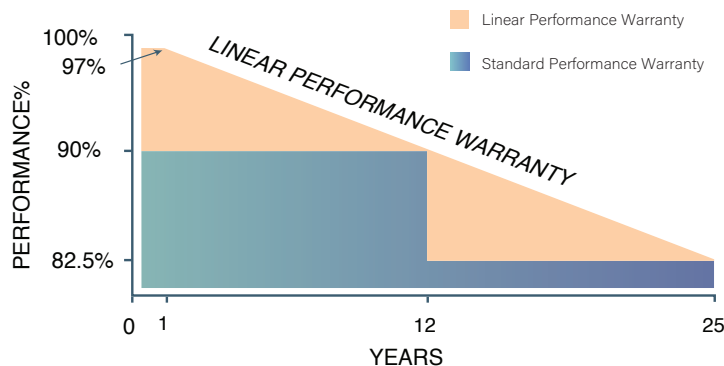
Mechanical Data

Cell Type	Mono crystalline 6 inch, 60 (6x12) pcs in series
Glass	High Transmission, Low Iron, Tempered Glass
Frame	Anodized Aluminum Alloy
Junction Box	IP65/IP67rated,with bypass diodes
Dimension	*77.17x39.02x1.57in.(1960x991x40mm)
Output Cable	4mm ² (EU)/12AWG(US), 39.37in(1000mm)
Weight	48.51lbs(22Kg)
Installation Hole Location	See Drawing Above

Characteristics

Temperature Coefficient of Voc	-0.28%/°C
Temperature Coefficient of Isc	0.04%/°C
Temperature Coefficient of Pmax	-0.37%/°C
Nominal Operating Cell Temperature (NOCT)	45±2°C
Module Fire Performance	Type 2
Static Snow Load	5400 Pa / 113 psf
Static Wind Load	2400 Pa / 50 psf
Maximum System Voltage	1500 VDC
Maximum Series Fuse Rating	20A

Linear Performance Warranty



Others: IEC 61215

SunSpark: DNV GL PVEL

◆ T/C 200	◆ T/C 600
◆ DH 1000	◆ DH 2000
◆ UV 60 kWhm ²	◆ UV 90 kWhm ²
◆ MEL 2400Pa@3 Cycle	◆ DML 1K Cycle+TC50+HF10
◆ PID N/A	◆ PID196h
◆ Field outdoor exposure N/A	◆ Field outdoor exposure 1 year

GTM PV MODULE RELIABILITY SCORECARD

Items	Conditions	Power Change (%)
T/C	600 cycles	-4.54
DH	2,000 hours	-2.33
	1,100 cycles at 1,440 pa	
MEL	2, TC 50 3, HF 10	-1.07
PID	1000V@192 hours	-0.82

