

# SN10-72

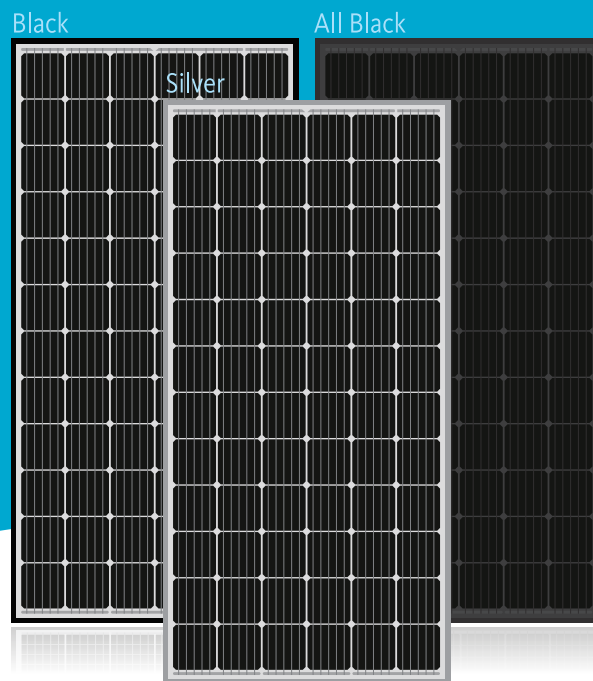
## 365~380W

### STANDARD Series

1,000V Monocrystalline PV Module

### CERTIFICATIONS

IEC 61215, 61730 / UL 61730  
 ISO 9001 : Quality Management System  
 ISO 14001 : Environmental Management System  
 ISO 45001 : Occupational Health & Safety System



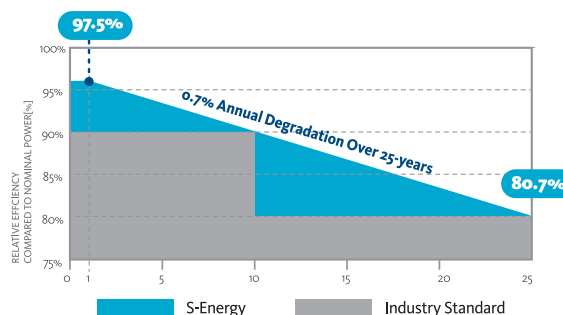
### FEATURES

- Enhanced External Load/Impact**  
 Snow Load : 5,400 Pa  
 Wind Load : 2,400 Pa
- PID Resistance**  
 Enhanced Potential Induced Degradation Resistance
- Fire Safety**  
 Spread of Flame Class A  
 Burning Brand Class C
- Higher output power**  
 0~+5Wp,  
 Higher than rated power
- Excellent performance under low light conditions**  
 Cloudy days, mornings and evenings
- Various Options Available**  
 Black or Silver Frame



### WARRANTY

- 12** -YEARS PRODUCT WARRANTY
- 25** -YEARS LINEAR PERFORMANCE WARRANTY



S-Energy Co., Ltd.

S-Energy America  
(SEAI America, Inc.)

S-Energy Chile  
(S-Energy Chile SpA)

S-Energy Japan\_Osaka Headquarters  
(S-Energy Japan Co., Ltd.)

S-Energy Japan\_Tokyo Branch  
(S-Energy Japan Co., Ltd.)

**A** 20 PanGyoYeok-Ro 241BeonGil, BunDang-Gu, SeongNam-Si, GyeongGi-Do, Korea (3F MiraeAsset Tower)  
**T** +82-70-4339-7100 **F** +82-70-4339-7199 **E** inquiry@s-energy.com

**A** 18022 Cowan, Suite 260, Irvine, CA 92614, U.S.A.  
**T** +1-949-281-7897 **F** +1-949-281-7893 **E** sales.us@s-energy.com

**A** Av. Cerro El Plomo N°5420, Office 402, Las Condes, Santiago, Chile  
**T** +56-22-604-8111 **E** sales.cl@s-energy.com

**A** 8F, MJ Abeno Bldg., 1-5-1, Maruyama-dori, Abeono-ku, Osaka-shi, Osaka, Japan  
**T** +81-6-4703-5388 **F** +81-6-4703-5387 **E** sales\_jp@s-energy.com

**A** Fukuroku Building 2F, 2-7 Kanda-Tsukasamachi, Chiyoda-ku, Tokyo, Japan  
**T** +81-3-6261-3759 **F** +81-3-6261-3769 **E** sales\_jp@s-energy.com

Homepage

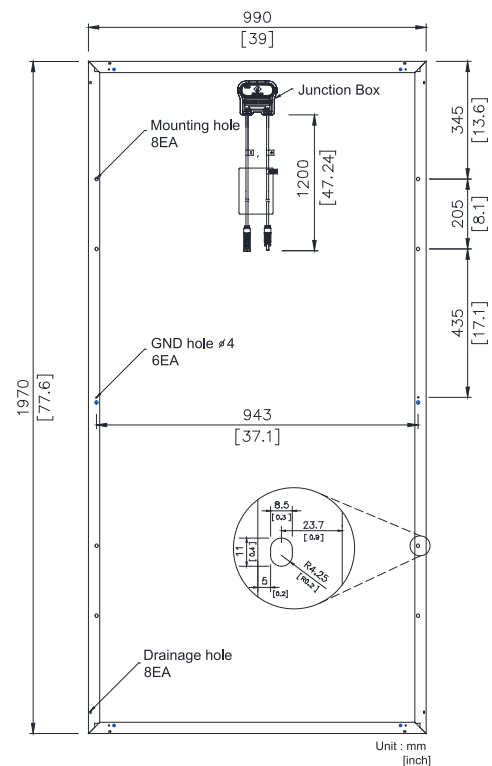


## ELECTRICAL CHARACTERISTICS

STC (Irradiance 1,000W/m <sup>2</sup> , module temperature 25°C, AM=1.5)	SN365M-10	SN370M-10	SN375M-10	SN380M-10
Rated Power (Pmax)	365W	370W	375W	380W
Voltage at Pmax (Vmp)	39,4V	39,8V	40,2V	40,6V
Current at Pmax (Imp)	9,25A	9,29A	9,32A	9,36A
Warranted Minimum Pmax	365W	370W	375W	380W
Short-Circuit Current (Isc)	9,74A	9,76A	9,79A	9,81A
Open-Circuit Voltage (Voc)	47,2V	47,5V	47,7V	47,9V
Module Efficiency	18,7%	19,0%	19,2%	19,5%
Operating Module Temperature	-40°C to +85°C			
Maximum System Voltage	1,000V			
Fuse Rating	15A			
Maximum Reverse Current	20,25A			
Power Tolerance	0 ~ +5W			

## MECHANICAL CHARACTERISTICS

<b>Solar Cells</b>	Monocrystalline Cells 156,75x156,75mm
<b>Number of Cells</b>	72 Cells (6x12 Matrix)
<b>Dimensions</b>	1,970 x 990 x 40mm
<b>Front Load</b>	5,400Pa
<b>Rear Load</b>	2,400Pa
<b>Weight</b>	23kg
<b>Glass</b>	3,2mm High-Transmittance Low Iron Tempered Glass
<b>Frame</b>	Anodized Aluminum Frame (Silver / Black)
<b>J-Box</b>	≥ IP67 with 3 bypass diodes
<b>Output Cables</b>	PV Wire (PV1-F), 12AWG (4mm <sup>2</sup> ), Cable Length : 1,200mm
<b>Connectors</b>	MC4 Original, Compatible

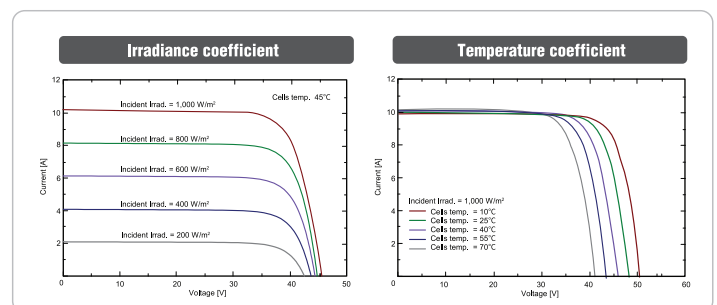


## TEMPERATURE CHARACTERISTICS

Temperature coefficient of Isc	0,046% / °C
Temperature coefficient of Voc	-0,282% / °C
Temperature coefficient of power	-0,394% / °C
NOCT (Tair 20°C ; Irradiance 800W/m <sup>2</sup> ; Wind 1m/s)	45±2 °C

## PACKING CONFIGURATION

Container	20'	40'
Modules Per Pallet	27pcs	27pcs
Pallets Per Container	9pallets	22pallets
Modules Per Container	243pcs	594pcs



### REMARKS

- Pmax measurement tolerance : ±2.5%
- S-Energy uses triple A class simulator.
- Specification subject to change without prior notice.
- S-Energy reserves the rights of final interpretation.

### NOTES

- Installation instruction supplied with the module must be duly followed.
- For further information which is not mentioned on installation guides or directions, please contact to our technical service department.
- E-mail : Inquiry@s-energy.com