

YGE-U 72 CELL SERIES

YL320P-35b
YL315P-35b
YL310P-35b
YL305P-35b
YL300P-35b



PROVEN PERFORMANCE IN LARGE-SCALE APPLICATIONS

Fully compatible with the latest fixed tilt and tracking technologies, the large-format YGE-U 72 Cell Series is engineered to maximize performance in both utility projects and large commercial systems.

16.5%

MAXIMUM EFFICIENCY

25 YEAR

LINEAR POWER WARRANTY

0 / +3%

POWER TOLERANCE



Long-Term Durability

Independent tests validate Yingli modules' high resistance to adverse environmental factors such as salt mist, ammonia, and blowing sand.



More Energy per Watt

From hot climates to low-light conditions, Yingli modules deliver superior energy yield in a wide range of temperatures and irradiances.



Global Scale

As one of the world's largest solar module manufacturers, Yingli has deployed over 14 GW of solar modules worldwide and supplied nearly 100,000 projects in the Americas.



Local Support

Yingli's dedicated local team provides comprehensive customer service through regional headquarters in New York and San Francisco.

Warranty Information

Ten-year limited product warranty. Industry leading 25-year performance warranty adds value by guaranteeing power output on an annual basis, in compliance with our warranty terms and conditions.

Performance Modeling

For those interested in obtaining module performance modeling files for system energy yield simulation, please contact Yingli at simulation@yingliamericas.com.

Qualifications & Certificates

CEC, FSEC, ISO 9001:2008, ISO 14001:2004, BS OHSAS 18001:2007, SA8000, UL 1703

YGE-U 72 CELL SERIES

Powered by **YINGLI**

ELECTRICAL PERFORMANCE

Electrical parameters at Standard Test Conditions (STC)

Module type			YL320P-35b	YL315P-35b	YL310P-35b	YL305P-35b	YL300P-35b
Power output	P_{max}	W	320	315	310	305	300
Power output tolerances	ΔP_{max}	%			0 / +3		
Module efficiency	η_m	%	16.5	16.2	16.0	15.7	15.5
Voltage at P_{max}	V_{mpp}	V	37.0	36.8	36.3	36.1	35.8
Current at P_{max}	I_{mpp}	A	8.64	8.56	8.53	8.45	8.37
Open-circuit voltage	V_{oc}	V	46.0	45.7	45.6	45.4	45.2
Short-circuit current	I_{sc}	A	9.18	9.12	8.99	8.93	8.86

STC: 1000W/m² irradiance, 25°C cell temperature, AM 1.5G spectrum according to EN 60904-3.

Electrical parameters at Nominal Operating Cell Temperature (NOCT)

Power output	P_{max}	W	233.4	229.8	226.1	222.5	218.8
Voltage at P_{max}	V_{mpp}	V	33.8	33.6	33.1	32.9	32.7
Current at P_{max}	I_{mpp}	A	6.91	6.85	6.82	6.76	6.70
Open-circuit voltage	V_{oc}	V	42.5	42.2	42.1	41.9	41.7
Short-circuit current	I_{sc}	A	7.42	7.37	7.27	7.22	7.16

NOCT: open-circuit module operation temperature at 800W/m² irradiance, 20°C ambient temperature, 1m/s wind speed.

THERMAL CHARACTERISTICS

Temperature coefficient of P_{max}	%/°C	-0.42
Temperature coefficient of V_{oc}	%/°C	-0.32
Temperature coefficient of I_{sc}	%/°C	0.05

OPERATING CONDITIONS

Max. system voltage	1000V _{DC}
Max. series fuse rating	15A
Limiting reverse current	15A
Operating temperature range	-40 to 185°F (-40 to 85°C)
Max. hailstone impact (diameter / velocity)	25mm / 23m/s

CONSTRUCTION MATERIALS

Front cover (material / thickness)	low-iron tempered glass / 4.0mm
Cell (quantity / material / dimensions / number of busbars)	72 / multicrystalline silicon / 156mm x 156mm / 3 or 4
Encapsulant (material)	ethylene vinyl acetate (EVA)
Frame (material / color)	anodized aluminum / silver
Junction box (ingress protection rating)	≥ IP65
Cable (length / cross-sectional area)	1100mm / 4mm ²
Connector (type / ingress protection rating)	MC4 / IP67 or Amphenol H4 / IP68

GENERAL CHARACTERISTICS

Module dimensions (L / W / H)	77.17in (1960mm) / 38.98in (990mm) / 1.57in (40mm)
Module weight	56.2lbs (25.5kg)
Number of modules per pallet	26
Number of pallets per 40' container	24
Packaging box dimensions (L / W / H)	78in (1995mm) / 45in (1145mm) / 46in (1170mm)
Packaging box weight	1559lbs (707kg)
Fire classification type	Type I and Type 2

Yingli Green Energy Americas, Inc.

info@yingliamericas.com

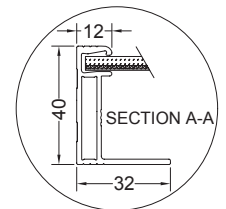
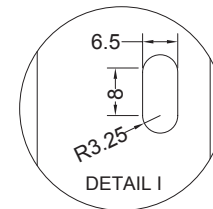
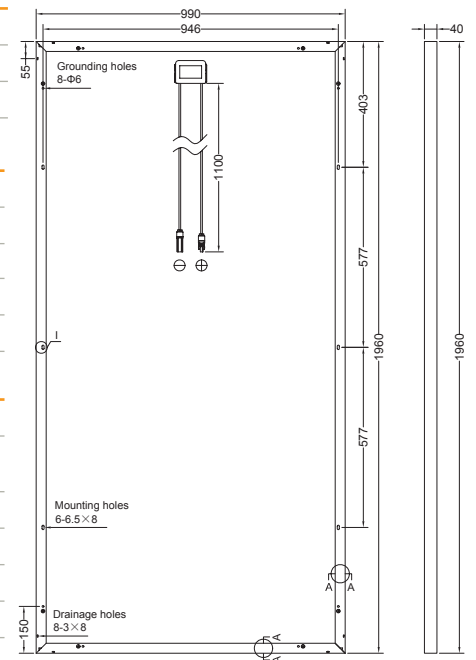
Tel: +1 (888) 686-8820

YINGLISOLAR.COM | NYSE:YGE

© Yingli Green Energy Holding Co. Ltd. | YGE-U72CellSeries_US_201602_V02

Yingli, Yingli Solar and the Yingli Logo are trademarks/registered trademarks of Yingli Energy (China) Company Ltd. Corp./its affiliated companies in the U.S. and elsewhere. All rights reserved. The specifications in this datasheet are not guaranteed and are subject to change without prior notice.

Units: inch (mm)



Warning: Read the Installation and User Manual in its entirety before handling, installing, and operating Yingli modules.

